

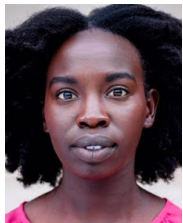
CAST INFORMATION

For Immediate Release

DATE: October 2019

CONTACT: Kori Radloff, korir@rosetheater.org, 402-502-4641

Ella Enchanted Cast Information



Aguel Lual
Ella



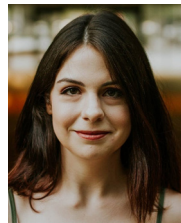
Joey Hartshorn
Dame Olga & Others



Lauren Krupski
Lucinda & Others



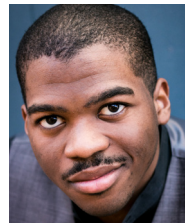
LaDareon LD Copeland
Sir Peter & Others



Shannon Duke
Hattie & Others



Carina DuMarce
Olive & Others



Marcel Daly
Prince Charmont & Others

Aguel Lual (*Ella*)

Aguel Lual is a recent graduate of the Johnny Carson School of Theatre and Film at UNL and could not be more excited to be making her Rose debut! Some of her favorite credits are Kate Monster in *Avenue Q* (Nebraska Repertory Theatre) Maurice in *Lord of The Flies* (Nebraska Rep) and Emmie Thibodeaux in *Caroline, Or Change* (Omaha Community Playhouse.) She also loves sharing theater with young audiences and has worked as a Teaching Artist with Flatwater Shakespeare's Little But Fierce program.

Joey Hartshorn (*Mother, Dame Olga, Menagerie Creature, Giant Bride*)

Joey Hartshorn is making her Rose Theater debut in *Ella Enchanted*. Brand spanking new to the area, she is excited and honored to be part of the Omaha theater scene. She was recently seen in OCP's *Ragtime* (Emma Goldman), she received the Barbara Ford Award for the 2018-2019 Season at OCP for her role as Marge in *Bridges of Madison County*. Some favorite past roles include, Penelope Pennywise (*Urinetown*), Nellie Lovett (*Sweeney Todd*), Margaret White (*Carrie the Musical*), Vivian Bearing (*Wit*), Becca (*Rabbit Hole*) God of Carnage (*Annette*), Sheila (*Boys Next Door*) Pirates of Penzance (*Ruth*) and some favorite directing credits include *Greenday's American Idiot*, *Dogfight*, *Spring Awakening*, *Heathers*, *Closetland*, *Beauty and the Beast* and *Next to Normal*. Joey is currently a Music Director and Creative Arts Director at First Lutheran Church in South Sioux City, a vocal artist with Resonance and a teaching artist with OCP.

=MORE =

The Rose Theater
2001 Farnam Street
Omaha, NE 68102

t (402) 345-4849
f (402) 344-7255
www.rosetheater.org



Cast Information - *Ella Enchanted*

at The Rose Theater

Page 2 of 3

Contact: Kori Radloff, 402-502-4641

Lauren Krupski (*Lucinda, Bird, Mistress Manners*)

Lauren was last seen on stage at The Rose in *The Cat in the Hat* as the Cat. Some other notable roles at the Rose include Princess Fiona in *Shrek the Musical*, Miss Shields in *A Christmas Story*, Penny in *Honk!*, and Julia in *The True Story of the Three Little Pigs*. She also was a part of two world premiere productions at The Rose: *Prancer* and *Pete the Cat*. Lauren has also performed many times with the Omaha Symphony in their family and educational shows. She has been seen in their educational program Mission Imagination for two years, performing in *The Misadventures of Melvin the Explorer* and *The Symphonic School Bus*. Most recently she performed with the Omaha Symphony as concert host with the program Link Up! She has also been seen with the Sarasota Orchestra, Rochester Philharmonic, and soon to be seen with the Lima Symphony and San Diego Symphony in "Gold Rush," a family concert celebrating American Composers.

LaDareon "LD" Copeland (*Sir Peter, Menagerie Creature, Ogre, Giant Groom, Squire*)

LaDareon Copeland (LD) is one of The Rose's Teaching Artist Fellows and is so excited to be making his Rose debut in *Ella Enchanted*. LaDareon graduated from Young Harris College in 2016. While there, he performed in multiple productions such as *Rent* (Tom Collins), *The Producers* (Carmen Ghia), and *Fences* (Jim Bono) where his school had the first fully African American cast production and was nominated for an Irene Ryan scholarship. He also was blessed to make his directorial debut at his college with *Songs for a New World*. After graduation, LD worked for multiple children's theaters such as First Stage Children's Theater, Missoula Children's Theatre, CLIMB Theatre in Minnesota, and Bay Area Children's Theater where he originated the role of Ramone in *Peg + Cat Live*. When he is not performing on The Rose stage, he also performs as Rustina Roze promoting equality, body positivity and love. He is so thankful for this opportunity to work with such an amazing cast.

Shannon Duke (*Hattie, Servant, Menagerie Creature, Ogre, Giant*)

Shannon grew up and trained in Southern California. After graduating from school she joined The Young Americans to train and travel all over the world. After participating as a guest artist and educator in the US, UK, and Japan, she then took off to finish her education. As of this May, she graduated from Midland University with a Bachelors Degree in Arts Management. During her time there, she had the opportunity to play some noteworthy roles, some of which included Mrs. Peacock (*Clue on Stage*), Queen Aggravain (*Once Upon a Mattress*), Mrs. Meers (*Thoroughly Modern Millie*), and Aldonza (*The Man of LaMancha*). She joined the Rose last season for her debut as The Manager in *Elf the Musical*, and has since become a guest educator for Musical Theater Classes.

Carina DuMarce (*Olive, Servant, Menagerie Creature, Ogre, Giant*)

Carina hails from South Dakota but studied Theater Arts at Minnesota State University Moorhead, in Moorhead Minnesota. While living in the Fargo/Moorhead area, Carina worked as a freelance theater artist directing, choreographing, prop designing, stage managing, teaching and acting. In Fall of 2018, Carina made their way to The Rose Theater to start as a Teaching Artist Fellow. Some of their favorite projects include *Winnie the Pooh* (as Winnie the Pooh), *Darkness Like A Dream* (as Hermia), *The Jungle Book* (as Baloo), *Eurydice* (Director), *Cinderella: If the Shoe Fits* (Director/Choreographer), *A Year with Frog and Toad* (Stage Manager) and Disney's *The Little Mermaid* (Stage Manager/Prop Designer).

=MORE =

Cast Information - *Ella Enchanted*

at The Rose Theater

Page 3 of 3

Contact: Kori Radloff, 402-502-4641

Marcel Daly (*Prince Charmont, Servant*)

Marcel Daly is excited to be returning to The Rose Theater in *Ella Enchanted*. Born and raised in Bellevue, Nebraska, he has loved performing since elementary school. As an alumni from Bellevue West High School, he was selected to represent Nebraska at the Jimmy Awards as a national nominee in New York City. Since then he has performed around the Omaha area, and graduated from the University of Nebraska at Omaha with a degree in Vocal Performance. Marcel's credits include: Benny in *In the Heights* (SNAP! Productions) Davy in *Newsies* (Rose Theater), Prince Eric in *The Little Mermaid* (Rose Theater), and Archibald Craven in *Secret Garden* (UNO Theatre Production). Marcel was last seen in *Joseph and the Amazing Technicolor Dreamcoat* as Reuben at the New Theatre Dinner and Restaurant in Kansas. In the future, Marcel plans to pursue a career as an actor, composer, writer and lyricist.

Nik Whitcomb (*Director*)

Nik Whitcomb holds a BA in theatre acting and directing from Creighton University. Born and raised in Omaha, Nik began his theatrical career at the age of six at the Omaha Theater Company for Young People (The Rose). Since his humble beginnings Nik has been active as a performer, director, educator, and theatrical administrator at The Rose as well as other companies in the Greater Omaha Area and New York City. Nik is currently based in Chicago, IL where he works as an actor, director, producer, casting director, and teaching artist.

Nik is a Casting Associate with Paskal Rudnicke Casting, Inc. where he works on commercial, television, and film projects and serves as the Casting Associate for Northlight Theatre in Skokie, IL. Nik has also served as casting director for Pride Films & Plays, Organic Theater Company, and is the Associate Producer/Director of Casting at Haven Chicago.

###