

CAST INFORMATION

For Immediate Release

DATE: September 2020

CONTACT: Kori Radloff, korir@rosetheater.org, 402-502-4641

Penguin Problems Cast Information



Malik Fortner
Mortimer

Malik Fortner (*Mortimer*)

Malik Fortner is originally from Michigan. He moved to Omaha in 2010 where he found his love for acting in a high school production of *Gift of the Magi*. He has been involved in professional theater and filmmaking since 2016. This is Malik's first show with The Rose and his first musical ever. Malik has been seen in *Walk the Night* (Blue Barn), *Love and Information* (Apollon), *Tamurrud* (Film), and *Chit* (Film). He is also an ensemble member of Kerfuffle and has been featured in a few local commercials. When he is not prepping for a show, Malik enjoys crafting cosplays, playing board games with his roommates, watching anime and playing video games.



Jessica Burrill Logue
Louise

Jessica Burrill Logue (*Louise*)

Jessica is excited to be back at The Rose in her fifth consecutive season opener. She is originally from Maine and has been involved in professional theater since the age of 3. You may have seen her on stage or assistant directing shows here at The Rose, such as *Naked Mole Rat Gets Dressed*, *the Rock Experience*, *Elf the Musical*, *Bucket Of Blessings*, *The Cat In The Hat*, *Go Dog Go*, *Thumbelina*, *Judy Moody & Stink: The Mad, Mad, Mad, Mad Treasure Hunt*, *Curious George* and *The Golden Meatball*, *Wynken, Blynken and Nod*, *Babe The Sheep Pig*, *Huck Finn* and *Good Night Moon!* She is an ensemble member in Kerfuffle TVY, has been the voice for commercials and videos in the Omaha Metro area as well as worked on shows for CBS and the Discovery Channel.

=MORE =

The Rose Theater
2001 Farnam Street
Omaha, NE 68102

t (402) 345-4849
f (402) 344-7255
www.rosetheater.org

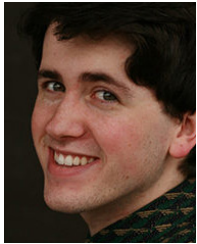


Cast Information - Penguin Problems

at The Rose Theater

Page 2 of 3

Contact: Kori Radloff, 402-502-4641



Ben Adams
Bob

Ben Adams (*Bob*)

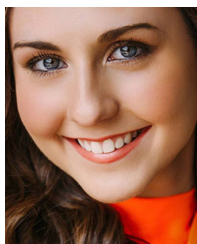
Ben Adams is excited to be returning to The Rose Theater after graduating with a BFA in Theatrical Performance and Direction from Creighton University. They have been seen previously onstage at The Rose in *Matilda* (Maternity Doctor), *Newsies* (Oscar Delancey), *Peter and the Starcatcher* (Tubby Ted), *A Christmas Story* (Skut Farkus). While at Creighton, Ben appeared in *Company* (Bobby), *She Kills Monsters* (Chuck), *Legally Blonde* (Warner Huntington III), *War of the Roses: A Fire Within* (Harry). They also set designed and acted in *Riot Repeat* (Blue Suffragette). They have been seen in *Catherland* (Ricky Lee; Shelterbelt), *Carrie* (Freddie; SNAP!), *Wizard of Oz* (Scarecrow, PLVCT), and has worked as a production assistant for Opera Omaha for three years. In their final year at Creighton, they began to focus their work on digitizing live theatre and streaming it for educational purposes. Their hope is to fully update and integrate live theatre with 21st century technology while also working with public entities to ensure adequate and free internet connection for all students.



LaDareon "LD" Copeland
Walrus/Ensemble

LaDareon "LD" Copeland (*Walrus/Ensemble*)

LD is one of The Rose's Teaching Artist Fellows and is so excited to be appearing in *Penguin Problems*. LD graduated from Young Harris College in 2016. While there, he performed in multiple productions such as *Rent* (Tom Collins), *The Producers* (Carmen Ghia), and *Fences* (Jim Bono) where his school had the first fully African American cast production and was nominated for an Irene Ryan scholarship. He also was blessed to make his directorial debut at his college with *Songs for a New World*. After graduation, LD worked for multiple children's theaters such as First Stage Children's Theater, Missoula Children's Theatre, CLIMB Theatre in Minnesota, and Bay Area Children's Theater where he originated the role of Ramone in *Peg + Cat Live*. When he is not performing on The Rose stage, he also performs as Rustina Roze promoting equality, body positivity and love.



Elizabeth Avery
Ensemble

Elizabeth Avery (*Ensemble*)

Elizabeth is beyond excited to be back at The Rose for *Penguin Problems*! She joined The Rose family at the age of 9 and was a BROADWAY at The Rose student until she graduated high school. Some of her favorite appearances include *Madeline's Christmas*, *The Wizard of Oz*, *Annie*, *Suessical the Musical*, *Tarzan*, *Peter Pan*, and *The Little Mermaid*. Elizabeth has recently graduated from Nebraska Wesleyan University with a BFA in Musical Theatre and a minor in Gender Studies. While in college, she loved the opportunities she was given to pursue an arts degree that allowed her to train in a wide variety of specialties. In the last four years in Lincoln, Elizabeth was blessed to work on over 35 productions as a performing artist, director, dance captain, choreographer, and production team member.

=MORE =

Cast Information - Penguin Problems

at The Rose Theater

Page 3 of 3

Contact: Kori Radloff, 402-502-4641



Sue Gillespie Booton
Choreographer
/ Octopus
/ Ensemble

Sue Gillespie Booton (*Choreographer/Octopus/Ensemble*)

Sue Gillespie Booton's national tour credits include *Annie Get Your Gun*, *Beehive*, and *Grease*. Most recent credits include *Elf* (Sam/Mrs. Santa), World Premiere of *The Dollmaker's Gift*, (Pola/Rebecca), *Rocky Horror* (Columbia), *Ring of Fire* (Ensemble) and *Always, Patsy Cline* (Louise). She was an original cast member in Omaha's longest running musical, *Beehive* (Brenda Lee, Petula Clark, Janis Joplin), and appeared in shows on Royal Caribbean, Carnival, Royal Viking and Europe's Sally Cruise Lines. Other Rose stage appearances include *Madagascar* (Gloria), *Cinderella* (Fairy Godmother) and *Cat in the Hat*, (Thing #1). Choreographic credits include *Elf The Musical*, *Matilda*, *Disney's Newsies*, *The Best Christmas Pageant Ever*, *Madagascar*, *Mary Poppins*, *A Christmas Story*, *Tarzan*, *Narnia*, *Peter Pan*, *HONK!* and *Annie - The Musical*. She won the 2019 Omaha Entertainment Award for "Outstanding Choreography" for *Newsies* and is the 2020 nominee for both *Elf* and *Matilda*. She was inducted into the Nebraska Music Hall of Fame Summer 2019 and is the 2014 recipient of the National Freddy G Award given to outstanding musical theater educators as well as the 2014 Theater Arts Guild Education Award winner. Sue is The Rose Theater's Resident Choreographer and Director of BROADWAY at The Rose, which includes The Rose Brigade and Dance Lab at The Rose.

###